



EXTREME MAMMALS

THE **BIGGEST, SMALLEST, AND MOST AMAZING MAMMALS** OF ALL TIME

EDUCATOR'S GUIDE

amnh.org/education/extrememammals



INSIDE:

- Suggestions to Help You **Come Prepared**
- **Essential Questions** for Student Inquiry
- Strategies for **Teaching in the Exhibition**
- **Map** of the Exhibition
- **Online Resources** for the Classroom
- Correlation to **Standards**
- **Student Worksheets** to Use in the Exhibition

ESSENTIAL QUESTIONS

This exhibition uses both living and extinct mammals to trace the ancestry and evolution of this remarkable group of animals. It's a story full of surprises, with quite a cast of characters.

What is a mammal?

You might have grown up thinking that all **mammals** share certain traits, like fur and giving birth to live young – and most living mammals do. But some are hairless, like the river dolphin, while a few others, like the echidna, or spiny anteater, lay eggs. So what defines this diverse group of animals? They all are descended from a common ancestor shared with no other living animals. Mammals can look radically different from each other, but the underlying body plan is still strikingly similar.

What's "normal" for mammals?

The terms "extreme" and "normal" are relative, of course. In mammals, one way to define normal is in terms of traits that are inherited from ancestors, such as producing milk, warm-bloodedness, and four limbs for walking, or **quadrupedalism**. Another way to think about "normal" is what is typically observed in the group. For example, today the typical mammal weighs about one pound, although for most of their history they were generally even smaller. All mammals have both normal and extreme, sometimes unique, features.

How and why are some mammals "extreme"?

As **species** evolve over time, "extreme" traits can arise: **characteristics** that differ widely from those found in ancestors or from the most common condition. Examples include the tiny brain of the extinct, two-ton *Uintatherium*; the bipedal hopping of kangaroos; or the venom of species of *Solenodon*, large shrew-like mammals. Humans also have a mix of both normal traits inherited from early ancestors (we're warm blooded and have differentiated teeth and five fingers and toes) and specialized extreme features (upright **bipedalism**, and big brains relative to our body size).



The six-banded armadillo is almost completely covered by bony, keratin-capped armor plates.

How have mammals evolved in response to changing environments?

As environments change over time, living things must adapt or go extinct. Different traits are favored in different habitats and are passed on to future generations. For example, when various groups of mammals invaded the sea, adaptations like blubber and flippers – which are modified limbs – helped them survive. Gargantuan blue whales can grow far larger than any land animal because water helps support their bulk. Their ancestors lost their teeth but evolved baleen in the upper jaw: rows of flexible plates made of **keratin** that help them capture vast amounts of small crustaceans. Tails also evolved a wide array of forms to help mammals swim, balance, grasp tree limbs, or keep warm.

How have extreme or specialized traits helped mammals adapt and survive?

Over millions of years, every part of the mammalian body was shaped and reshaped through **evolution**, from snout to tail. Sometimes remarkable in form, these adaptations conferred evolutionary advantages, like the extremely long premolars of the extinct marsupial *Thylacoleo carnifex* or rodents' sharp incisors, which never stop growing. **Echolocation** evolved independently in a few specialized groups, including bats, cetaceans (dolphins and whales), and subterranean shrews. Evolving big brains relative to body size distinguishes mammals from other vertebrates, and humans from all other mammals. Much of the increase occurs in the cerebrum, the part of the brain largely associated with thought, memory, most senses, and information processing. Some of the most remarkable adaptations occurred when mammals evolved in isolated areas.

How do scientists study mammals?

Scientists observe mammals in their environments, and analyze modern and **fossil** specimens back in the laboratory. Combining physical and genetic data helps scientists recognize the relationships between species. Today, nearly 25 percent of living mammal species are threatened with **extinction**, even as new species are still being discovered. Scientists find them by exploring – and helping to protect – remote ecosystems in the ongoing quest to learn more about life on Earth.



USEFUL CONCEPTS

Natural Selection and Adaptation

Individuals inherit traits, or features, from their parents. Those members of a species with traits that help them survive in a particular environment — like the sharp, piercing canines and slicing molars of **carnivores** versus the flat grinding teeth of mammals that eat tough grasses — pass on these characteristics. Generation after generation, individuals with the advantageous trait, or **adaptation**, will survive longer and produce more offspring, until most or even all members of the species possess it. Called **natural selection**, this is an important mechanism of evolution.

Convergent Evolution

This refers to situations in which different groups evolve similar adaptations because they live in similar environments. These species may even live on different continents and be far apart on their family trees. For example, high-crowned grinding teeth for chewing tough grasses have evolved independently in a diverse suite of mammals, including bison, horses, elephants, some rodents, and many extinct mammal groups.

Mammal Reproduction

The ancestor of all mammals almost certainly laid eggs, as do most vertebrates and a tiny minority of living mammals, the **monotremes** — like the platypus and echidnas of Australia and New Guinea. But the vast majority of modern mammals are **placentals**. They've evolved to give live birth to babies that are nourished for a long time inside the mother's body, using an organ called a placenta. A few hundred other living species (and many more fossil forms), like koalas and kangaroos, are **marsupials**; their young are born very immature and much of their development occurs while drinking milk, typically inside a pouch on their mother's belly. The group Mammalia is named for mammary glands, which produce milk — as all mammal species do.



Koala, a marsupial

Come Prepared

Before your visit, review the **Essential Questions** to see how the exhibition's educational themes connect to your curriculum. Identify what you'd like your students to learn from **Extreme Mammals**, and how they could continue learning back in the classroom. Visit the *Extreme Mammals* website at amnh.org/extrememammals and thestoryoftexas.com/extrememammals/ to learn more about the exhibition.

This Guide includes **Activities** for **Before You Visit**, **During Your Visit**, and **Back in the Classroom**, and **Student Worksheets**. These activities are designed to be used together to focus your visit around one or two themes. Here are some other ways to explore the *Extreme Mammals* exhibition:

- You (and your class chaperones) can use the **Teaching in the Exhibition** section of this guide as you move through the gallery with students.
- You can create student worksheets using the **Teaching in the Exhibition** section.
- You can distribute copies of the **Map of the Exhibition** to chaperones and/or students, and let them choose their own paths.

Visit thestoryoftexas.com/extrememammals/ for:

- information on field trips, reservations, and other useful tips to help plan your visit
- free resources, including activities and references

Correlation to the Texas Essential Knowledge and Skills (TEKS)

Your visit to the *Extreme Mammals* exhibition can be correlated to the following Science TEKS:

- (K.10.A) Sort plants and animals into groups based on physical characteristics such as color, size, body covering, or leaf shape.
- (1.10.A) Investigate how the external characteristics of an animal are related to where it lives, how it moves, and what it eats.
- (2.10.A) Observe, record, and compare how the physical characteristics and behaviors of animals help them meet their basic needs such as fins help fish move and balance in the water.
- (3.10.A) Explore how structures and functions of plants and animals allow them to survive in a particular environment.

Continued

Correlation to the Texas Essential Knowledge and Skills (TEKS)

- (4.10.A)** Explore how adaptations enable organisms to survive in their environment such as comparing birds' beaks and leaves on plants.
- (5.10.A)** Compare the structures and functions of different species that help them live and survive such as hooves on prairie animals or webbed feet in aquatic animals.
- (7.11.C)** Identify some changes in genetic traits that have occurred over several generations through natural selection and selective breeding such as the Galapagos Medium Ground Finch (*Geospiza fortis*) or domestic animals.
- (7.12.A)** Investigate and explain how internal structures of organisms have adaptations that allow specific functions such as gills in fish, hollow bones in birds, or xylem in plants.
- (8.11C)** Explore how short- and long-term environmental changes affect organisms and traits in subsequent populations.
- (Biology.7)** The student knows evolutionary theory is a scientific explanation for the unity and diversity of life.
- (Biology.8.B)** Categorize organisms using a hierarchical classification system based on similarities and differences shared among groups.

TEACHING IN THE EXHIBITION

The *Extreme Mammals* exhibition uses fossils, models, live animals, interactives, videos, and more to engage individuals with all learning styles. This guide divides the exhibition into ten areas, which are indicated on the map and described below.

1. Introduction

Overview: Living and fossil mammals exhibit a huge range of shapes and sizes.

Exploration:

- **Animal models:** Have students compare and contrast these life-size models of the largest land mammal and the smallest mammal that have ever lived. Point out that despite all the differences, we're all mammals.

Guiding Questions:

- What do the largest and the smallest mammals have in common with each other? With humans?

2. What is a Mammal?

Overview: Mammals are defined by common ancestry, not by physical characteristics – although inherited traits do help us recognize relationships between mammals.

Exploration:

- **Video:** Encourage your students to watch the video, focusing on the traits shared by living mammals.

- **Skulls:** These show how specialized teeth and skull anatomy evolved in the ancestors of mammals. Ask students to compare the skulls and how they've changed over millions of years.

This opening on the skull of synapsids, like *Cynognathus* (below) and mammals, show that they are related.



- **Cladogram:** The wall-size evolutionary tree shows where mammals fit in the tree of life and how all mammals have evolved from a common ancestor. Point out the many branches. Ask students what this shows about mammal evolution.

Guiding Questions:

- Most living mammals have certain traits in common. Why? What are they?
- How do scientists determine what a mammal is?

3. What is Extreme?

Overview: "Extreme" traits differ widely from those found in ancestors, or from the most common, typical, or "normal" form at any moment in time. Most mammals possess a combination of extreme and normal features.

Exploration:

- **Human, *Uintatherium*, and opossum skeletons:** Ask students to distinguish between normal and extreme characteristics in each of these species.

Guiding Questions:

- What are some examples of extreme and normal characteristics in these three mammals?
- Are humans extreme or normal? Why?

4. Head to Tail: Heads

Overview: Mammalian bodies have been modified by evolution. Some of these changes are found in the head.

Exploration:

- **"Headgear" and skulls of living and extinct mammals:** Point out to students that headgear can be formed from teeth, bones, and even hair. Ask them how horns and antlers are similar, and different.
- **Skulls with teeth:** Invite students to compare and contrast the different types of mammal teeth, and to use the mirror to compare them to their own teeth.

Guiding Questions:

- What are different kinds of teeth used for?
- What are some of the functions of headgear?

5. Head to Tail: Reproduction

Overview: Reproduction is one of the main features that differentiates the three living groups of mammals: placentals, marsupials, and monotremes. (See "Useful Concepts.")

Exploration:

- **Taxidermy and fossil specimens:** Invite students to examine these specimens, as well as the video, and explore how each of these groups gives birth.

Guiding Questions:

- How do different types of mammalian mothers care for their young?
- How do the gestation periods for each of the three major groups compare? What are some of the benefits of a long pregnancy? The drawbacks?

6. Head to Tail: Bodies

Overview: All mammals share a common body plan, but evolution has resulted in astonishing variations on the arrangement of bones, muscles, and skin.

Exploration:

- **Glyptodont armor:** Students can “try on” the model and imagine having this much armor. Ask how it might compare to having spines or scales.
- **Hair and fur:** Point out that hair, horns, scales, hooves, and fingernails are all made of the same material, keratin. Invite students to touch and explore the specimens.

Guiding Questions:

- What are the various functions of hair and fur?
- How do different body coverings benefit mammals? How do these coverings relate to environmental conditions?
- Which would you rather have, venom or armor? Why?

7. Mammals in Motion

Overview: Ancestral mammals lived on land. Some groups of mammals later adapted to move through other environments like the sky and the ocean.

Exploration:

• **Walking whale model:**

Explain that like most other mammals, all whales are descended from an ancestor with four limbs and feet. Ask students whether *Ambulocetus* lived in water or on land, and to support their answers.



Ambulocetus, an amphibious early whale with legs, probably hunted small mammals much as today's crocodiles do.

- **“Lucy” pelvis:** Look closely at the diagram comparing “Lucy’s” pelvis with those of chimpanzees and humans. Ask students how these mammals moved, and how human locomotion is unique.
- **Bats, flying squirrel, and Mesozoic gliding mammal:** Have students note the similarities between the bat wing and their own arm. Ask them to compare bat flight to the gliding of the squirrel or the Mesozoic mammal (*Volaticotherium*).

Guiding Questions:

- How do most mammal bipeds (those that walk on two legs) get around?
- Many groups of mammals evolved to live in water. How did their bodies change?

8. Extreme Climates

Overview: Environments change with time, and so do the mammals that inhabit them.

Exploration:

• **Diorama of the Eocene and Images of Today:**

Ask students to compare conditions on Ellesmere Island 50 million years ago to those today.

Guiding Questions:

- How are the mammals in each scene adapted to their environment?
- What are some of the ways in which major climate change has affected mammal diversity?

9. Extreme Isolation

Overview: When mammals are geographically isolated, they can evolve extreme traits or can come to resemble unrelated species elsewhere. (See “Useful Concepts.”)

Exploration:

- **Monkey skull:** Have students read the displays, and ask them to explain how the skull solved the puzzle of how and when monkeys reached South America.
- **Scarrittia case:** Point out that these South American species all belong to the same group, and resemble a wide range of groups found on other continents.

Guiding Questions:

- What kinds of extreme forms have evolved in places that once were isolated?
- Why is isolation so important in the origin of different, distinctive, and “extreme” forms?

10. Extreme Extinction

Overview: Although sometimes rapid, and affecting vast numbers of species, extinctions are part of the history of life. One mammal, *Homo sapiens*, is contributing to what may become the next mass extinction (the “Sixth Extinction”).

Exploration:

- **La Brea Tar Pits walk-through display:** These mammals are only 11,000 years old, but all are extinct. What does this tell us about how fast extinction can occur? How does it affect species diversity?
- **Tasmanian wolf specimen:** Ask students to think about what is unusual about this marsupial.

Guiding Questions:

- What human activities contribute to extinction?
- How can preserving existing habitats slow extinction rates and lead to the discovery of new species?

ONLINE RESOURCES

Abundant online resources for grades K-12 are available through the Museum's Education site (amnh.org/education/resources) and the Bullock Texas State History Museum (thetoryoftexas.com/extrememammals/).

- **Extreme Mammals Exhibition:** amnh.org/extrememammals

(Grades K-12)

This online version of the exhibition highlights extreme mammals, fun facts, and videos.

- **Extreme Mammals for Educators:** amnh.org/education/extrememammals

(Grades K-12)

This site provides resources related to *Extreme Mammals* that can be used across all grade levels. Additional resources are provided by the American Museum of Natural History, Scholastic Science, the Smithsonian, and National Geographic.

- **Zoology OLogy:** amnh.org/explore/ology/zoology

(Grades 3-5)

This site gives younger students the chance to explore big ideas about mammals and other animals through games, puzzles, and interactives. They can examine how six cool mammals move, explore the *Extreme Mammal* photo gallery, use masks to compare their teeth to those of different mammals, and make a moving-mammal flip book.

- **Science Bulletins:** amnh.org/explore/science-bulletins

(Grades 6-12)

Videos, interactives, and essays introduce middle- and high-school students to biologists and conservationists who study mammals around the world. Learn about the greening of the arctic, the benefit dung beetles provide to the environment, and why scientists are growing miniature brains.

FUN FACTS

- There are more than **5,400 species** of mammals living today!
- **Batodonoides** is the smallest mammal that ever lived. It weighed as much as a dollar bill.
- The **blue whale** is the largest animal – mammal or otherwise – ever known. It can grow to nearly 200 tons (400,000 pounds)!
- **Humans** are extreme in many ways: large brains, upright locomotion, and sparse body hair.
- The placid-looking male **platypus** has a secret weapon: spurs on its hindfeet that deliver toxic venom!
- **Koalas** are not bears. They're marsupials and are more closely related to kangaroos.

CREDITS

Extreme Mammals is organized by the American Museum of Natural History, New York (www.amnh.org), in collaboration with the California Academy of Sciences, San Francisco; Canadian Museum of Nature, Ottawa, Canada; and Cleveland Museum of Natural History.

Major funding for *Extreme Mammals* has been provided by the Lila Wallace-Reader's Digest Endowment Fund.

Additional generous support for *Extreme Mammals* has been provided by the Bill and Ann Ziff Foundation, the Eileen P. Bernard Exhibition Fund, and Harlan B. Levine, MD and Marshall P. Levine.

The Museum extends its gratitude to the L.W. Frolich Charitable Trust for its support of this Educator's Guide.

This Educator's Guide was produced by the Education Department at the American Museum of Natural History.

AMERICAN MUSEUM OF NATURAL HISTORY 

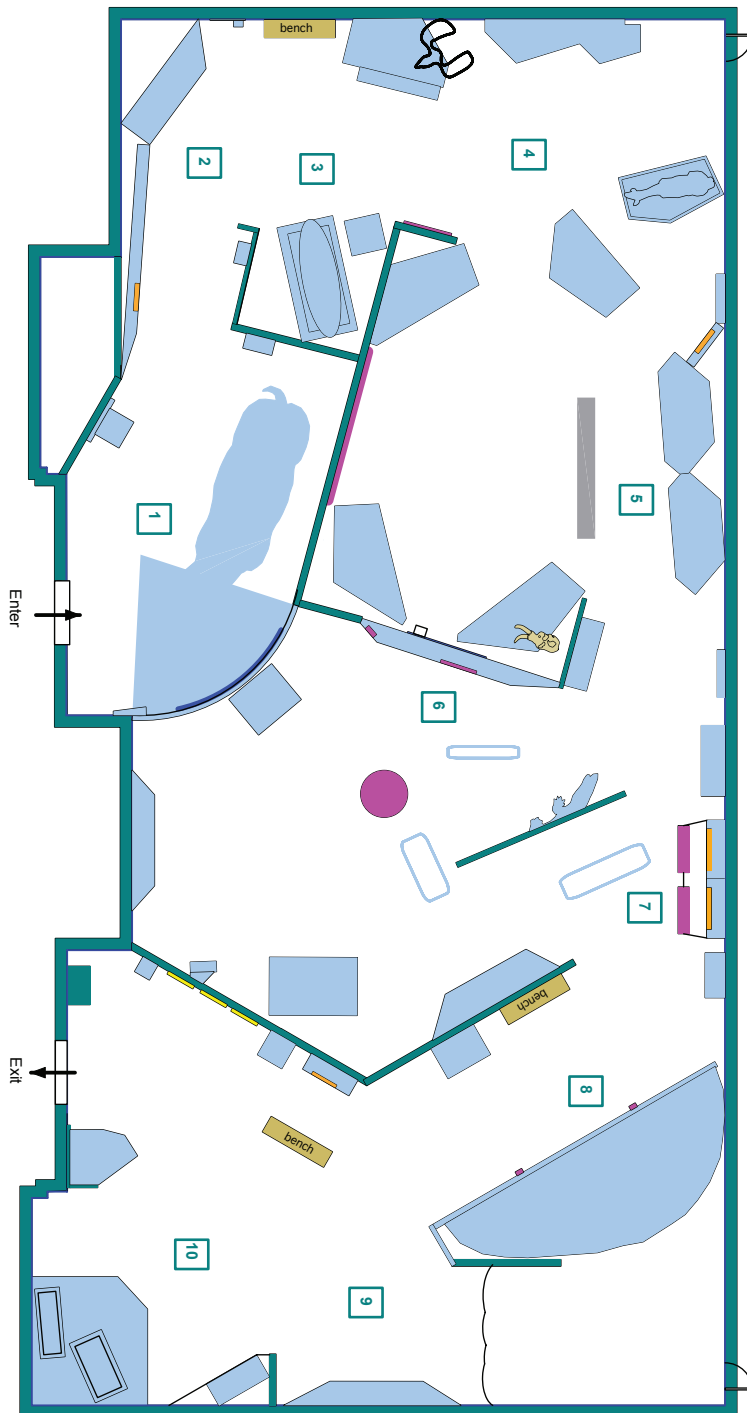
© 2009 American Museum of Natural History. All rights reserved.

Photo Credits

Cover: platypus and *Batodonoides*, © AMNH/R.Mickens; *Uintatherium*, © Mauricio Anton; ibex and ring-tailed lemur, © iStockPhoto. **Essential Questions:** six-banded armadillo, © iStockPhoto; koala, © AMNH/R.Mickens. **Come Prepared:** *Repenomamus*, © Mauricio Anton. **Teaching in the Exhibition:** *Cynognathus* skull, © AMNH; *Ambulocetus*, © Carl Buell. **Glossary of Terms:** *Smilodon*, © Mauricio Anton; Tasmanian wolf, © AMNH; kinkajou, © StockByte/AGE Fotostock. **Student Worksheet K-2:** raccoon and saber-toothed cat skulls, © AMNH/J.Holmes. **Student Worksheet 3-5:** *Dimetrodon*, *Cynognathus*, and *Uintatherium* skulls, © AMNH/J.Holmes.



MAP OF THE EXHIBITION



1. Introduction

Living and fossil mammals exhibit a huge range of shapes and sizes.

2. What is a Mammal?

Mammals are defined by common ancestry, not by physical characteristics – although inherited traits do help us recognize relationships between mammals.

3. What is Extreme?

“Extreme” traits differ widely from those found in ancestors, or from the most common, typical, or “normal” form at any moment in time. Most mammals possess a combination of extreme and normal features.

4. Head to Tail: Heads

Mammalian bodies have been modified by evolution. Some of these changes are found in the head.

5. Head to Tail: Reproduction

Reproduction is one of the main features that differentiates the three living groups of mammals: placentals, marsupials, and monotremes.

6. Head to Tail: Bodies

All mammals share a common body plan, but evolution has resulted in astonishing variations on the arrangement of bones, muscles, and skin.

7. Mammals in Motion

Ancestral mammals lived on land. Some groups of mammals later adapted to move through other environments like the open skies and the deep sea.

8. Extreme Climates

Environments change with time, and so do the mammals that inhabit them.

9. Extreme Isolation

When mammals are geographically isolated, they can evolve extreme traits or can come to resemble unrelated species elsewhere.

10. Extreme Extinction

Although sometimes rapid, and affecting vast numbers of species, extinctions are part of the history of life. One mammal, *Homo sapiens*, is contributing to what may become the next mass extinction (the “Sixth Extinction”).

GLOSSARY OF TERMS

Bipedalism: using two feet to stand and move on land (by walking, hopping, or running). Relatively few modern mammal species are bipeds.

Smilodon, a saber-toothed cat, lived in the Americas between 2.5 million and 10,000 years ago.



Carnivore: an animal that eats primarily meat, whether scavenged or hunted. Most living species of the mammal order Carnivora (dogs, bears, cats, seals, and their relatives) are carnivores like their common ancestor, but some have evolved to eat primarily fish, fruit, or even leaves.

Cladogram: a tree-like diagram that depicts the evolutionary history of a group of organisms. Branching points are where new, advanced features appeared, and species diverged from common ancestors.

Characteristic: any feature or trait of an organism that can be measured, counted, or otherwise assessed, such as hair color or number of limbs. Characteristics help biologists distinguish one species from another.

Echolocation: the process of emitting sound waves and listening to the echoes to navigate and locate food – or “biological sonar.” Echolocation evolved independently in bats, cetaceans (dolphins and whales), shrews, and some other mammals.

Evolution: the process by which populations accumulate genetic changes over time that are passed on from ancestors to subsequent generations, or descent with modification. (See “Useful Concepts.”)

Extinction: the death of every member of a biological species or all species in a bigger group of organisms. The vast majority of species that have lived on Earth are now extinct.

Fossil: Typically preserved in rocks, fossils are any remains or traces of ancient life. Examples include bones, teeth, shells, leaf impressions, nests, and footprints. Fossils document how organisms changed over time, and how they’re related to one another.

Herbivore: an animal that eats plants, like horses and mice. In the food web, herbivores link primary producers (plants) and consumers such as predators (carnivores).

Keratin: a fibrous protein that is the main component of structures that grow from the skin, such as hair, hooves, nails, claws, and horns.

Mammal: a class of vertebrate animals descended from the common ancestor of living placentals, marsupials, and monotremes. Almost all mammals share certain physical characteristics: they have hair, they’re warm-blooded, and they produce milk to nurse their young.



Not a wolf at all, the Tasmanian wolf (*Thylacinus cynocephalus*) was a carnivorous marsupial that went extinct in 1936.

Marsupial: a group of a few hundred living (and many more fossil) mammal species named for a distinctive pouch (called the marsupium) in which many species carry their young. Born tiny and very undeveloped, the young feed on their mother’s milk for an extended period of time, often in a pouch.

Monotreme: a group of living mammals that lay eggs instead of giving birth to live young, as the vast majority of living mammals do.

Placental: Placental mammals bear live young, which are nourished before birth through a specialized organ (a placenta) that attaches to the mother’s uterus as an embryo grows. Although most living placental species are rodents and bats, this diverse group also includes whales, elephants, shrews, armadillos, and humans, among many other species.

Prehensile: adapted for grasping or holding. This adaptation confers many advantages, in feeding (the giraffe’s tongue), locomotion (the monkey’s tail), drinking and defense (the elephant’s trunk), and other activities.

Quadrupedalism: using four limbs or legs to move. Most land mammals are quadrupeds.

Species: a basic unit of biological classification. A species is often defined as a group of organisms that share ancestry and characteristics, and can interbreed and produce fertile offspring.



A tree-dwelling relative of the raccoon, the kinkajou can use its fully prehensile tail as a “fifth hand” when climbing.

GRADES K-2 ACTIVITIES

Welcome to *Extreme Mammals: The Biggest, Smallest, and Most Amazing Mammals of All Time*. Use this sheet to help your class explore mammals – what they look like, their shapes and sizes, and where they live. The activities below and on the Student Worksheet can be adapted to meet your students' interests and abilities.

BEFORE YOUR VISIT

Class Discussion: Introduce your students to the material covered in the **Essential Questions** section of this guide under *What is a mammal?* and *What is extreme?* Ask them to describe mammals that live in the water, on land, and in treetops.

Online Activity: Invite students to explore the diversity of mammals with this virtual tour at San Diego Zoo Kids (kids.sandiegozoo.org/animals/mammals). Describe similarities between the mammals during a group discussion. Explain that students will discover more about mammals when they visit the exhibition.

Classroom Activity: Download "What Teeth Tell Us" (amnh.org/explore/curriculum-collections/dinosaurs-ancient-fossils-new-discoveries/what-teeth-tell-us). After they've completed the activity, ask your students to describe the two different kinds of teeth and what they are used for.

DURING YOUR VISIT

IN THE EXTREME MAMMALS EXHIBITION: Exploration

Use the activities and guiding questions in Sections 1 and 4 of **Teaching in the Exhibition** in this Guide to help students in their exploration of the biggest, smallest, and most amazing mammals. Have them share which mammal in the exhibit they liked the most, and why.

Go to the **Heads** area and ask students to compare the teeth of living and extinct mammals. Use Section 4 of **Teaching in the Exhibition** for strategies to explore this area.

IN THE EXTREME MAMMALS EXHIBITION: Extension

Visit the **What is a Mammal?** section. Ask students to choose one animal to sketch or draw on the back of their worksheet. Remind students to include characteristics such as body covering, ears, eyes, and feet that help the mammal meet its basic needs.

BACK IN THE CLASSROOM

Activity: Have students create their own "extreme mammal," including features like horns, fur, bony plates, flippers, and prehensile tails. Have them name their animal, explain to the class why they chose these special features, and describe how these features would help their animal survive.

Activity: Take a bite! Have students sample a variety of foods (an apple, a sandwich, a snack bar, or crackers), and ask them to think about which teeth they use for each bite. Ask what kind of diet their teeth are adapted for.

Texas Connection: Which mammal on the third floor of the Bullock Texas State History Museum has extreme horns? Sketch a picture showing the animal and its horns. What is special about this mammal?

Texas Essential Knowledge and Skills (TEKS)

K.10.A

Sort plants and animals into groups based on physical characteristics such as color, size, body covering, or leaf shape.

1.10.A

Investigate how the external characteristics of an animal are related to where it lives, how it moves, and what it eats.

2.10.A

Observe, record, and compare how the physical characteristics and behaviors of animals help them meet their basic needs such as fins help fish move and balance in the water.

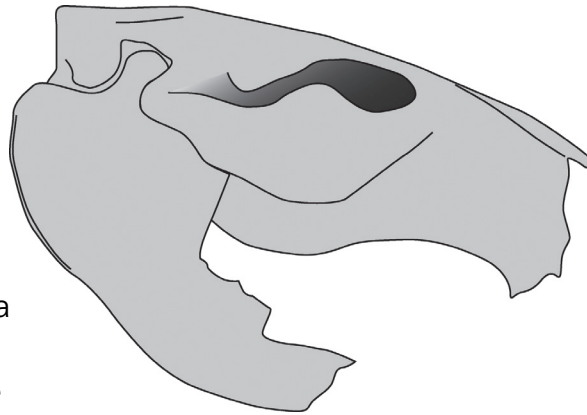
Students can use the reproducible on the reverse side of this sheet to further explore these concepts. Provide chaperones with a copy of the **Map of the Exhibition** to help them find locations in *Extreme Mammals*.

STUDENT WORKSHEET

GRADES K-2

What are teeth for?

Go to Section 4, HEAD TO TAIL: HEADS. Find the beaver skull in the TEETH area. **Draw its teeth in the skull here.** →



Circle all the ways a beaver can use its teeth:

- grabbing
- slicing
- cutting
- chewing
- whistling

Now go to the HEADGEAR area and find the fossil beaver skull with horns. Compare it with the other beaver. How are they the same? How are they different?

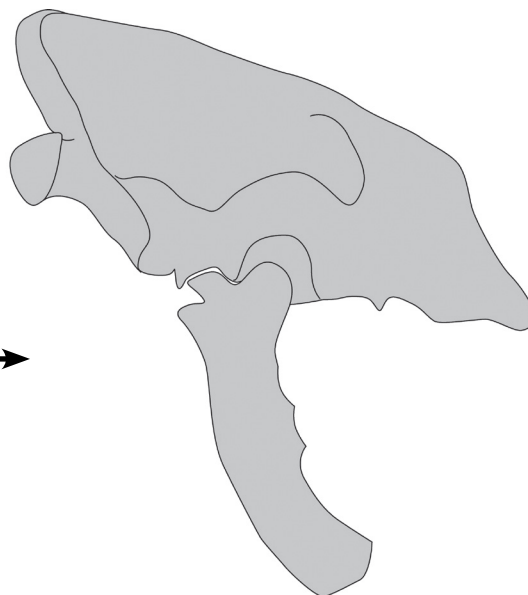
Make a Face

Look in the mirror in the TEETH section to see how your teeth compare with the teeth of other mammals. Which mammal is your favorite? Why? _____

How are your teeth like that animal's teeth? How are they different? Share your answers with your classmates.

Find the saber-toothed cat!

Lion and tiger teeth may be impressive, but not compared to the giant teeth of these extinct cats!



Draw the teeth of the Saber-toothed cat in the skull. →

A saber-toothed cat was a:
(Circle your answer.)

plant-eater

meat-eater

Why do you think so?

GRADES K-2 ACTIVITIES

Welcome to Extreme Mammals: The Biggest, Smallest, and Most Amazing Mammals of All Time. Use this sheet to help your class explore mammals – what they look like, their shapes and sizes, and where they live.

The activities below and on the Student Worksheet can be adapted to meet your students' interests and abilities.

BEFORE YOUR VISIT

Class Discussion: Introduce your students to the material covered in the Essential Questions section of this guide under What is a mammal?

All mammals produce milk, are warm-blooded, and have four limbs. What is extreme? *Extreme mammals have features that are unique or special compared to other mammals.* Ask them to describe mammals that live in the water, on land, and in treetops.

These include:

Water — Seal, dolphin, and otter

Land — giraffe, deer, and tiger

Treetops — the woolly monkey and the sloth

Online Activity: Invite students to explore the diversity of mammals with this virtual tour at San Diego Zoo Kids (kids.sandiegozoo.org/animals/mammals). Describe similarities between the mammals during a group discussion. Explain that students will discover more about mammals when they visit the exhibition. *While looking at the animals and reading the descriptions, observe the characteristics that help the different mammals meet their basic needs. Fur keeps animals warm. Large ears help animals to hear sounds from far away. Quills protect a porcupine from predators. Sharp claws help large cats climb trees.*

Classroom Activity: Download "What Teeth Tell Us" (amnh.org/explore/curriculum-collections/dinosaurs-ancient-fossils-new-discoveries/what-teeth-tell-us).

After they've completed the activity, ask your students to describe the two different kinds of teeth and what they are used for. *Sharp teeth are used by carnivores, or meat-eating animals, for cutting meat into chunks that are then swallowed (chewing not necessary). Flat teeth are used by herbivores, or plant-eating animals, to grind plant material before swallowing; this helps with the digestion of plant material.*

DURING YOUR VISIT

IN THE EXTREME MAMMALS EXHIBITION: Exploration

Use the activities and guiding questions in Sections 1 and 4 of **Teaching in the Exhibition** in this Guide to help students in their exploration of the biggest, smallest, and most amazing mammals.

Have them share which mammal in the exhibit they liked the most, and why.

Go to the **Heads** area and ask students to compare the teeth of living and extinct mammals. Use Section 4 of **Teaching in the Exhibition** for strategies to explore this area.

IN THE EXTREME MAMMALS EXHIBITION: Extension

Visit the What is a Mammal? section. Ask students to choose one animal to sketch or draw on the back of their worksheet. Remind students to include characteristics such as body covering, ears, eyes, and feet that help the mammal meet its basic needs. *Example: The short beaked echidna is covered in quills which protect it from predators. The koala has claws that allow it to grasp tree limbs where it lives. The coyote has thick fur to keep it warm.*

ANSWER KEY

Texas Essential Knowledge and Skills (TEKS)

K.10.A

Sort plants and animals into groups based on physical characteristics such as color, size, body covering, or leaf shape.

1.10.A

Investigate how the external characteristics of an animal are related to where it lives, how it moves, and what it eats.

2.10.A

Observe, record, and compare how the physical characteristics and behaviors of animals help them meet their basic needs such as fins help fish move and balance in the water.

Students can use the reproducible on the reverse side of this sheet to further explore these concepts. Provide chaperones with a copy of the **Map of the Exhibition** to help them find locations in *Extreme Mammals*.

GRADES K-2 ACTIVITIES cont'd

Activity: Have students create their own “extreme mammal,” including features like horns, fur, bony plates, flippers, and prehensile tails. Have them name their animal, explain to the class why they chose these special features, and describe how these features would help their animal survive.

[Students can use crayons, markers, paper, cardboard, clay, model magic and other materials to sketch a drawing or create a model.]

Activity: Take a bite! Have students sample a variety of foods (an apple, a sandwich, a snack bar, or crackers), and ask them to think about which teeth they use for each bite. Ask what kind of diet their teeth are adapted for.

Human teeth are adapted to eat meat or plants (omnivore). The front teeth are used for nipping chunks of food into “bite-sized” pieces and the flat back teeth (molars) are used for grinding food before swallowing.

ANSWER KEY

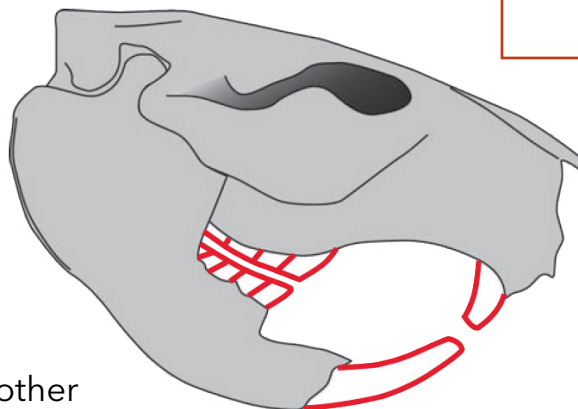
Texas Connection: Which mammal on the third floor of the Bullock Texas State History Museum has extreme horns? Sketch a picture showing the animal and its horns. What is special about this mammal? *The longhorn is a hybrid resulting from the mixing of Spanish cattle and English cattle. Their horns can extend to 7 feet.*

STUDENT WORKSHEET

GRADES K-2

What are teeth for?

Go to Section 4, HEAD TO TAIL: HEADS. Find the beaver skull in the TEETH area. **Draw its teeth in the skull here.** →



Now go to the HEADGEAR area and find the fossil beaver skull with horns. Compare it with the other beaver. How are they the same? *The teeth of the extinct beaver and the modern beaver have the same basic shape.* How are they different? *The extinct beaver has horns and the modern beaver doesn't. The modern beaver skull is much larger.*

ANSWER KEY

Circle all the ways a beaver can use its teeth:

- grabbing
- slicing
- cutting
- chewing
- whistling

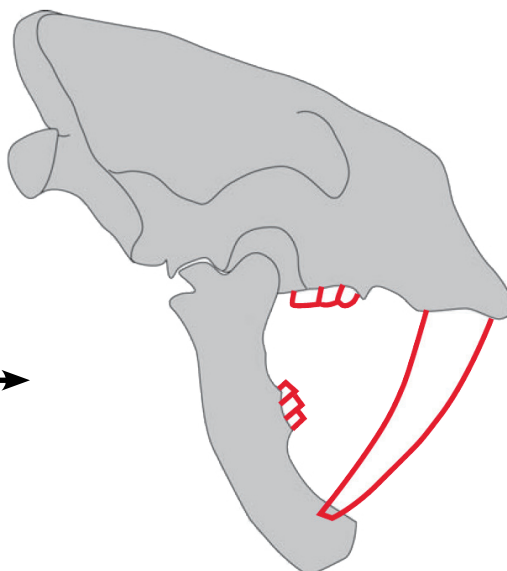
Make a Face

Look in the mirror in the TEETH section to see how your teeth compare with the teeth of other mammals. Which mammal is your favorite? Why? _____

How are your teeth like that animal's teeth? *Answers will vary.* How are they different? *Answers will vary.* Share your answers with your classmates.

Find the saber-toothed cat!

Lion and tiger teeth may be impressive, but not compared to the giant teeth of these extinct cats!



Draw the teeth of the Saber-toothed cat in the skull. →

A saber-toothed cat was a: (Circle your answer.)

plant-eater

meat-eater

Why do you think so?

